

WE ARE
**CHILEAN
ANIMATION**.COM
AT **PIXELATL**
2 0 2 4

CATALOGUE

FEATURE FILMS
SHORT FILMS
SERIES

ANIMACHI
Asociación Nacional de Animadores y Productores de Chile

Chile



WE ARE
**CHILEAN
ANIMATION**.COM
AT **PIXELATL**
2 0 2 4

CATALOGUE

FEATURE FILMS

ANIMACHI
Asociación Nacional de Animadores y Productores de Chile

Chile



AKVO

AKVO

GVG PRODUCCIONES | IN DEVELOPMENT | 120'

@gvgproduccioneschile

JULIAN ROSENBLATT

DIRECTION

PABLO ROSENBLATT

PRODUCTION

FAMILY

TARGET

GVG PRODUCCIONES

COMPANY

julianresenblatt@gmail.com

www.gvgproducciones.com

[instagram/@gvgproduccioneschile](https://www.instagram.com/gvgproduccioneschile)

[youtube/@CanalGVG](https://www.youtube.com/CanalGVG)

[facebook.com/gvgproduccioneschile](https://www.facebook.com/gvgproduccioneschile)

BO (12) a curious boy with the forbidden power to draw holographically, after using his power he is condemned to the maximum penalty by Badá (60), the manipulative chief of the albino tribe, who has made everyone believe that the sun is evil and harms them.

Bo flees, having to adapt to a new life. There he discovers that the sun does not harm him, so he decides to return to his tribe and use his power to unmask Badá. Finally, Bo manages to free his people and Badá dies because of his own fears.



BAPTISM

PISTA B | IN DEVELOPMENT | 80'

@pista.b.prod

HUGO COVARRUBIAS

DIRECTION

LUCAS ENGEL

PRODUCTION

ADULTS

TARGET

PISTA B

COMPANY

lucasengelc@gmail.com

@pista.b.prod

@hcovarrubias

When he realizes that the VHS of his belated baptism is missing, Hector begins to revisit blurry memories of his childhood and youth, filling in the blanks of his family's history during the years of the military dictatorship in Chile.



THE DEVIL'S VEIN

FORMIDABLE STUDIO | PRODUCTION | 100'

@formidable.studio

GERMAN ACUÑA
DIRECTION

SEBASTIAN RUZ
PRODUCTION

FAMILY
TARGET

FORMIDABLE STUDIO
COMPANY

azu@formidable.studio
@formidable.studio

In a small mining town, the local tycoon tells stories of a gold mine that could turn the whole town into a wealthy estate.

Many locals volunteer, including Jose, an 18 year old raising himself and his younger sister, Mercedes.

The miners go down, but succumb to an evil force deep within the mine, disappearing from the face of the Earth.

The town gives up fast, but Mercedes takes it upon herself to find her brother and the missing gold, no matter the costs.

She'll have to take on the tycoon and perhaps even the Devil himself, but she will find out what happened deep down in The Devil's Vein.

WE ARE
**CHILEAN
ANIMATION** .COM
AT **PIXELATL**
2 0 2 4

ANIMACHI

Chile



LUCILA

PÁJARO | IN DEVELOPMENT | 80´

@pajaropip

BERNARDITA OJEDA
DIRECTION

MARÍA WOOD
PRODUCTION

FAMILY
TARGET

PÁJARO
COMPANY

bernardita@pajaro.cl
www.pajaro.cl
[instagram/@pajaropip](https://www.instagram.com/pajaropip)

Fleeing the mockery of her classmates, Lucila finds solace in her notebook, where her imagination comes to life, leading her to a unique and unknown territory.

There, she encounters Huemul, an orphaned deer, and Tolomí, a young hunter. Together, they embark on a fantastic journey, seeking to reunite Huemul with his lost family.

Throughout this adventure, they forge an indestructible friendship, inspiring Lucila to rewrite her own story.

WE ARE
**CHILEAN
ANIMATION**.COM
AT **PIXELATL**

2 0 2 4

CATALOGUE

SERIES

ANIMACHI

Chile



WE ARE
**CHILEAN
ANIMATION** .COM
AT **PIXELATL**
2 0 2 4

ANIMACHI

Chile



FEATHERBRAINS

PATAKA | DISTRIBUTION | 3' X8

@seriepajarones

KIKE ORTEGA
DIRECTION

COTY LUZORO
GUILLE MIGRIK
PRODUCTION

TEENS / ADULTS
TARGET

PATAKA
COMPANY

holapataka@gmail.com
www.pataka.studio/proyectos
[instagram/@seriepajarones](https://www.instagram.com/seriepajarones)

Being the new birds in the big city can be hard, but there's no adventure like leaving the nest, especially when you do it with your best friend.

WE ARE
**CHILEAN
ANIMATION**.COM
AT **PIXELATL**
2 0 2 4

ANIMACHI

Chile



LOCOS LAB

DINOGORILA CREATIVE LAB | DISTRIBUTION | 11' X26

@locos.lab

CARLOS ULISSE
DIRECTION

ISABEL ROSEMBLATT
CRISTIAN QUEZADA
PRODUCTION

KIDS
TARGET

DINOGORILA CREATIVE LAB
COMPANY

c.ulissel@gmail.com
www.locoslab.tv
linktr.ee/locos_labserie
instagram.com/7@locos.lab

A trip to Mars? Fact.
Getting into the human brain? Fact.
That your house is the craziest of all labs? Fact.

Having a nice family dinner... Still working on it

BOCA SUCIA

LA SERIE



BOCA SUCIA

HERA MANAGEMENT | DISTRIBUTION | 11' X13

maxnarr@gmail.com

SERGIO PAVEZ
DIRECTION

MAX NARR
MARIA GRACIELA SEVERINO
PRODUCTION

KIDS
TARGET

HERA MANAGEMENT
COMPANY

maxnarr@gmail.com
www.heramanagement.cl

Ramón Boca Sucia is a 10-year-old boy who expresses himself with bad words.

That is, until one day, because of so much rudeness, his mouth turns into a toilet.

From then on, Ramón will live in a constant effort not to say rude words while he lives the adventures of his daily life sharing with his friends and family, the challenges of being a child and trying not to say bad words.

WE ARE
**CHILEAN
ANIMATION** .COM
AT **PIXELATL**
2 0 2 4

ANIMACHI

Chile



HI FLINKO

DINOGORILA CREATIVE LAB | DISTRIBUTION | 11' X26

c.ulissel@gmail.com

ISABEL ROSEBLATT
CARLOS ULISSE
DIRECTION

CARLOS ULISSE
KARINA JURY
PRODUCTION

KIDS
TARGET

DINOGORILA CREATIVE LAB
COMPANY

c.ulissel@gmail.com
www.Holaflinko.tv

Flinko (5 years old), is a curious and friendly platypus, that travels around the world with his parents getting to know the animals that inhabit it.

With his explorer spirit and his camera in hand, he will be helping these friends and documenting his experiences in his photo album.



CUENTOS NANAY

LA FORMA CINE | POST PRODUCTION | 6' X12

@laformacine

ELISA ELIASH
DIRECTION

CLARA TARICCO
PRODUCTION

KIDS
TARGET

LA FORMA CINE
COMPANY

clara@laformacine.com
www.laformacine.com
[@laformacine](https://www.instagram.com/laformacine)

Nanay Tales is a series for children ages 3 to 6, these animations were adapted from the tales of the "Story Doctor", Australian writer and therapist Susan Perrow.

The stories are specially structured to have healing effects and are widely used to solve different upbringing problems based on the Emergency Education principles.

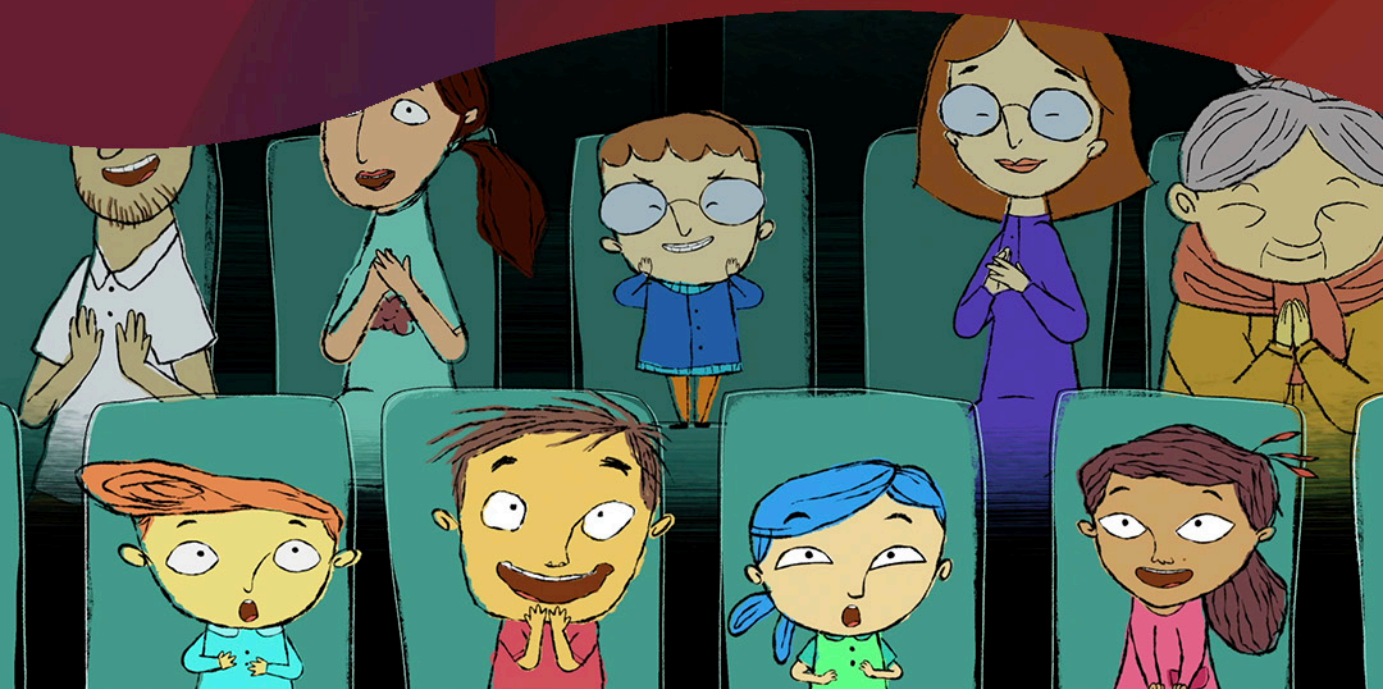
The structure is divided into three parts: Metaphor, where figures are proposed for identification.

The Journey, in which the character faces the conflict and the resolution constructively and reflexively. In this season, some of the conditions included are anxiety, aggression, illness and death, dishonesty, separation and mixed families, bullying, and lack of social sense.

WE ARE
**CHILEAN
ANIMATION**.COM
AT **PIXELATL**
2 0 2 4

ANIMACHI

Chile



PETIT

PÁJARO | PRODUCTION | 11' X26

@pajaropip

BERNARDITA OJEDA
DIRECTION

CRISTIÁN FREIRE
PRODUCTION

KIDS
TARGET

PÁJARO
COMPANY

bernardita@pajaro.cl
www.pajaro.cl
[instagram/@pajaropip](https://www.instagram.com/pajaropip)

In a world that goes on, works out, and does as it does... Petit pauses to look, enjoy, laugh and wonder how the world is, how it works and goes along.

WE ARE
CHILEAN
ANIMATION .COM
AT **PIXELATL**
2 0 2 4

ANIMACHI

Chile



ONI CALAMITY

MARMOTA STUDIO | PRE PRODUCTION | 11' X13

hola@marmotastudio.com

MATÍAS LATORRE
DIRECTION

MAX NARR
MARIA GRACIELA SEVERINO
PRODUCTION

TEENS
TARGET

MARMOTA STUDIO
COMPANY

hola@marmotastudio.com
www.marmotastudio.com

In an archipelago where humans and Onis coexist, Nabo, a timid Oni sailor, accidentally releases the spirit of the Devil.

In his quest to find the ashes to resurrect it, he faces the dilemma of either saving his people or losing Rayen, the human he loves.

Amidst dangers and manipulations, Nabo discovers his true identity as a captain while embarking on a thrilling journey with Rayen, challenging social norms and confronting the Devil's sect.



ALMA AND THE FOREST OF DREAMS

GVG PRODUCCIONES | IN DEVELOPMENT | 11' X26

julianrosenblatt@gmail.com

JULIÁN ROSENBLATT
DIRECTION

PABLO ROSENBLATT
PRODUCTION

KIDS
TARGET

GVG PRODUCCIONES
COMPANY

julianrosenblatt@gmail.com
[instagram/@gvgproduccioneschile](https://www.instagram.com/gvgproduccioneschile)

Every time Alma (6) feels some emotion unfamiliar to her, the magical forest in which she lives reacts and some fantastic natural phenomenon is unleashed: when she is sad, it rains torrentially or if she feels an overflowing joy, flowers grow non-stop, invading everything.

With Kai, the guide bird of the forest, her best friend Loreley, her little sister Nita and Kalfú, her faithful companion, they will have to restore the forest, but in the attempt, they will make everything worse.

They discover that it is actually Alma who must be brought back to calm. In each episode, Kai sings a song to calm Alma's emotions, helping her through the melody and the lyrics to recognize what is happening to her.

When Alma finds out what's wrong with her, she now sings to the forest and brings peace back.



ANITA RANITA

FORMIDABLE STUDIO | IN DEVELOPMENT | 13' X6

@formidable.studio

GERMAN ACUÑA
DIRECTION

SEBASTIAN RUZ
PRODUCTION

PRE SCHOLAR
TARGET

FORMIDABLE STUDIO
COMPANY

info@formidable.studio
seba@formidable.studio
instagram/@formidable.studio

What are a young frog and her animal friends to do in the forest?

Why, enjoy it, of course! The group of explorers spends their days learning the values of the forest and how every little action can have an impact on woodland life.

With the lively artwork, bouncy music and cuddly characters, children all over the world will love hanging out with Anita Ranita and friends!

WE ARE
CHILEAN
ANIMATION .COM
AT **PIXELATL**
2 0 2 4

ANIMACHI

Chile



MR. NEKO'S TREASURE BAZAAR

FORMIDABLE STUDIO | IN DEVELOPMENT | 7' X10

@formidable.studio

GERMAN ACUÑA
DIRECTION

SEBASTIAN RUZ
PRODUCTION

TEENS
TARGET

FORMIDABLE STUDIO
COMPANY

info@formidable.studio
seba@formidable.studio
instagram.com/@formidable.studio

In a post-apocalyptic future live 3 kids who work as treasure hunters in a particular business: Mr. Neko's Bazaar.

Their mission is to go through an old and run-down city in search of all types of objects to satisfy their funnily extravagant customers' needs.

Each errand is an adventure and the trio will do the work while at the same time they solve their own hilarious personal conflicts.



LIRIO

AKWA CREATIVE LAB | PRE-PRODUCTION | 7' X26

@gvgproduccioneschile

AMANDA FERNANDES
DIRECTION

AMANDA FERNANDES
JULIAN ROSENBLATT
PRODUCTION

KIDS
TARGET

AKWA CREATIVE LAB
COMPANY

amanda@somosakwa.com
www.gvgproducciones.com
[instagram/@gvgproduccioneschile](https://www.instagram.com/gvgproduccioneschile)
[youtube/@CanalGVG](https://www.youtube.com/CanalGVG)
[facebook.com/gvgproduccioneschile](https://www.facebook.com/gvgproduccioneschile)

Lirio is 5 years old and, like most kids that age, he doesn't want to do boring chores that his mother asks him to do.

It's easier to listen to his friend, the dragonfly Bela, and become a tree.

After all, when have you ever seen a tree brushing its teeth? They sure do live well.

WE ARE
CHILEAN
ANIMATION .COM
AT **PIXELATL**
2 0 2 4

ANIMACHI

Chile



DESERT SISTERS

MARMOTA STUDIO | PRODUCTION | 30´TV SPECIAL

hola@marmotastudio.com

BERNARDITA PASTÉN
MATIAS LATORRE
DIRECTION

MAX NARR
MARÍA GRACIELA SEVERINO
PRODUCTION

TEENS
TARGET

MARMOTA STUDIO
COMPANY

hola@marmotastudio.com

Maria and Rosa oppose the eradication of the Kallpa desert culture by the Empire.

However, their alliance with the enemy prince, who harbors feelings for Maria, creates a conflict between the sisters, leading them to question whether the end justifies the means in their pursuit of victory

WE ARE
CHILEAN
ANIMATION .COM
AT **PIXELATL**
2 0 2 4

ANIMACHI

Chile



TALLY MOLLY

PÁJARO | PRE-PRODUCTION | 11' X26

bernardita@pajaro.cl

BERNARDITA OJEDA
DIRECTION

CRISTIÁN FREIRE
TRINIDAD CUEVAS
PRODUCTION

KIDS
TARGET

PÁJARO
COMPANY

bernardita@pajaro.cl
pajaro.cl

Meet Tally Molly, a fearless but caring explorer with magical powers and tons of attitude!

Tally is curious about everything and everyone and she will uncover big and small mysteries in every adventure.

But most of all, Tally loves her peculiar neighbours and she is always there to help!



LUCILLE

KILTROPO ANIMATION | IN DEVELOPMENT | 11' X15

@kiltropo_animation

VALENTINA SUAZO
DIRECTION

DIEGO GARCÍA
PRODUCTION

TEENS
TARGET

KILTROPO ANIMATION
COMPANY

hola@kiltropo.com
www.kiltropo.com
[@kiltropo_animation](https://www.instagram.com/kiltropo_animation)

Meet Danna, a 10-year-old girl whose life takes a surprising turn when her ostomy pouch, Lucille, gains the ability to speak.

With the support of her loved ones, Danna navigates the ups and downs of middle school, embarking on a journey of self-discovery and adventure.

Along the way, she learns to embrace her differences and discovers that being unique and special is a strength to be celebrated.



DANI'S FICTION RULES

PATAKA | IN DEVELOPMENT | 5' X20

holapataka@gmail.com

COTY LUZORO
DIRECTION

KIKE ORTEGA
PRODUCTION

KIDS
TARGET

PATAKA
COMPANY

holapataka@gmail.com
www.pataka.studio/proyectos

Dani is a fictional character living in a white canvas, where she dreams of finding the supreme tale of tales: her own story.

WE ARE
**CHILEAN
ANIMATION**.COM
AT **PIXELATL**
2 0 2 4

CATALOGUE

SHORT FILMS

ANIMACHI
ANIMACIÓN MOVIMIENTO CULTURA

Chile



WE ARE
**CHILEAN
ANIMATION**.COM
AT **PIXELATL**
2 0 2 4

ANIMACHI

Chile



CASABLANCA BROTHERS

LUNES | DISTRIBUTION | 9'

jose@estudiolunes.cl

SANTIAGO O'RYAN
JOSE NAVARRO
DIRECTION

JORGE CAMPUSANO
PRODUCTION

TEENS / ADULTS
TARGET

LUNES
COMPANY

jose@estudiolunes.cl
vimeo.com/lunescinetv

The Casablanca Brothers, Antonio (31) and Gabriel (26), amateur chess players and seafood artisans, embark on an intimate journey across the imposing Pacific Ocean in search of the lost body of the son of a Chilean military officer, Major Correa, lost at sea.

The initial plan: to find the body in exchange for information on the whereabouts of his sister Lucía, who was detained and disappeared during the dictatorship.

WE ARE
**CHILEAN
ANIMATION** .COM
AT **PIXELATL**
2 0 2 4

ANIMACHI

Chile



DOS MENOS

MECHA COOPERATIVA | DISTRIBUCIÓN | 8'

@dos_menos

TAROA ZÚÑIGA
CARLOS ZERPA
DIRECTION

TAROA ZÚÑIGA
CARLOS ZERPA
XIMENA ARAYA
PRODUCTION

TEENS & ADULTS
TARGET

MECHA COOPERATIVA
COMPANY

2less.shortfilm@gmail.com

@dos_menos

@mechacoop

Two young migrant women die under mysterious and dark circumstances due to the repressive actions of the Chilean state.

From beyond the grave, Joanne and Beatriz share their stories of emigration, their dreams, and their experiences of motherhood. They also reveal how the country they had hoped would offer them a new beginning instead became a trap that cornered and threatened them, ultimately leading to their tragic deaths.



THE SCARLET TAMAGOCHI

PISTA B | PRE-PRODUCTION | 13'

@pista.b.prod

FRANCISCO RIVERA VISCERAL
DIRECTION

LUCAS ENGEL
PRODUCTION

KIDS
TARGET

PISTA B
COMPANY

lucasengelc@gmail.com
Instagram/@pista.b.prod
Instagram/@franciscovisceral
Instagram/@elsocias

A crime has occurred in the 4B classroom!

Magdalena suffered the theft of a priceless and precious toy: The Scarlet Tamagochi, so Iñaki and his turtle friend Cecilio become private detectives from the 40's to solve the mystery.

However, they will have to face dark powers that will not make their task easy.

WE ARE
**CHILEAN
ANIMATION**.COM
AT **PIXELATL**
2 0 2 4

ANIMACHI

Chile



THE GRAY WINGS

KILTROPO ANIMATION | PRE PRODUCTION | 18'

@kiltropo_animation

ERNESTO LEÓN MOREIRA
DIRECTION

VALENTINA SUAZO
PRODUCTION

ADULTS
TARGET

KILTROPO ANIMATION
COMPANY

hola@kiltropo.com
www.kiltropo.com
[Instagram/@kiltropo_animation](https://www.instagram.com/kiltropo_animation)

In the future, a mysterious jukebox lights up out of nowhere to Nina, an astronaut trapped on Venus; in the 70s, to Ema, an orphan girl in the midst of the dictatorship in Chile; and today, to Isaac, a dangerous murderer sentenced to death.

Each of them will witness the magic of the jukebox and how, thanks to its music, Nina will gather the strength to escape from Venus; Ema will discover that there are people willing to help her; and Isaac will come to understand the value of human life.



ANIMA OF DAWN

PISTA B | PRE-PRODUCTION | 13'

@pista.b.prod

MARÍA IGNACIA HARGREAVES
GUILLERMO ARIAS
DIRECTION

LUCAS ENGEL
PRODUCTION

FAMILY
TARGET

PISTA B
COMPANY

lucasengelc@gmail.com
Instagram/@trashxtower
Instagram/@pista.b.prod

Zul, a baby ogre, gets trapped against its will in the Albariscope, a subterranean mechanical world ruled by the Mad King Ogre.

Hypnotized by the sparkle of a bizarre diamond, Zul roams this underworld labyrinth alongside its trusty skeleton ally Zulka, defying the evil ruler while crossing paths with eerie creatures that'll help them escape the caverns and finally see the light.

WE ARE
**CHILEAN
ANIMATION** .COM
AT **PIXELATL**
2 0 2 4

ANIMACHI

Chile



BLACK SUNDAY: CONTACT

KILTROPO ANIMATION | IN DEVELOPMENT | 5' X15

@kiltropo_animation

ERNESTO LEÓN
DIRECTION

VALENTINA SUAZO
PRODUCTION

ADULTS
TARGET

KILTROPO ANIMATION
COMPANY

hola@kiltropo.com
www.kiltropo.com
[Instagram/@kiltropo_animation](https://www.instagram.com/kiltropo_animation)

An astronaut witnesses the sudden arrival of a dark planet, seeing his crewmates die during the event, only to find them alive on his ship.

A hacker and his cult, obsessed, kidnap children born on the day of the planet's arrival.

A detective investigates a mysterious series of murders, uncovering a shocking truth related to the same event.

Different stories and seemingly unrelated experiences intertwine in this anthology series.

WE ARE
**CHILEAN
ANIMATION**.COM
AT **PIXELATL**
2 0 2 4

ANIMACHI

Chile



DAVID VERSUS

DOLORES | IN DEVELOPMENT | 80'

vimeo.com/estudiodolores

SANTIAGO O'RYAN
DIRECTION

CATALINA FONTECILLA
PRODUCTION

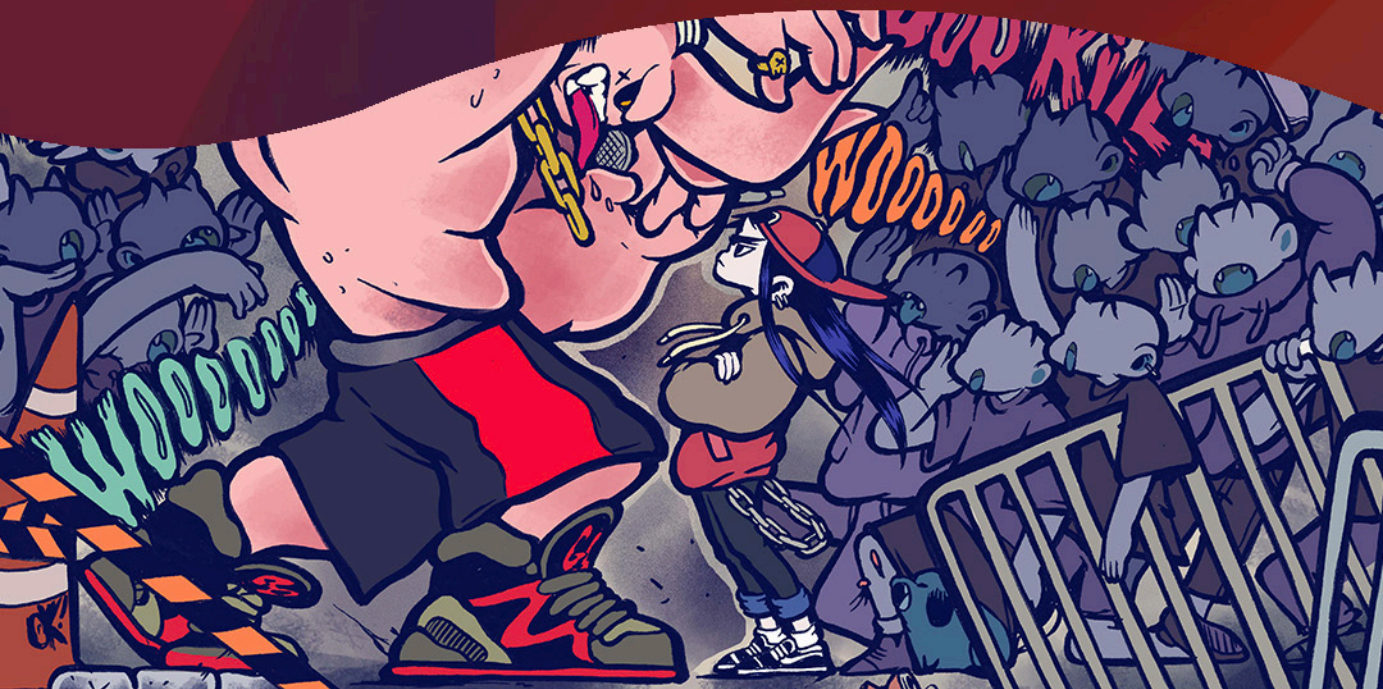
TEENS
TARGET

DOLORES
COMPANY

productoradolores@gmail.com
vimeo.com/estudiodolores

A group of 13-year-old kids, led by Dan, accidentally awakens a powerful artificial intelligence called the "Glitch."

which takes over the world's internet and enslaves humanity. They are the only ones who can defeat it, but to do so, they must return to a completely analog life.



FRIDASTYLE

DOLORES | IN DEVELOPMENT | 11' X12

vimeo.com/estudiodolores

SANTIAGO O'RYAN
DIRECTION

CATALINA FONTECILLA
PRODUCTION

TEENS
TARGET

DOLORES
COMPANY

productoradolores@gmail.com
vimeo.com/estudiodolores

Frida, aka "FridaStyle," is a 13-year-old demon girl who dreams of becoming a great street freestyle rapper and performing on big stages.

However, as a girl, she is constantly rejected by a group of male demons who believe they are better than her.

Frida will have to fight with rhymes, flow, and double tempo in the underground hip-hop circuit, showcasing her talent from plaza to plaza until she makes a name for herself in a culture that initially rejects her.

WE ARE
**CHILEAN
ANIMATION**.COM
AT **PIXELATL**
2 0 2 4

CATALOGUE

ANIMACHI
Asociación Nacional de Animadores y Productores de Chile

Chile



WE ARE
**CHILEAN
ANIMATION**.COM
AT **PIXELATL**

ANIMCHI

Chile

